

Cladding & Soffit Package

PROJECT:

COMPANY:

GENERAL CONTRACTOR:

ARCHITECT:

LOCATION:



Geolam[®]
Architectural Eco-Technology

Garden Hills, Atlanta, GA
Vertigo 5010 - Rosewood

info@geolaminc.com
usa.geolam.com

GEOLAM RAINSCREEN CLADDING/SOFFIT

TABLE OF CONTENTS

1. Vertigo 5010 Installation Guide
2. Product Specs/Data
3. Geolam Warranty



INSTALLATION AND MAINTENANCE GUIDE

Cladding & Soffit

Geolam[®]
Architectural Eco-Technology

Asurion HQ, Nashville, TN
Vertigo 5010 - Bilinga

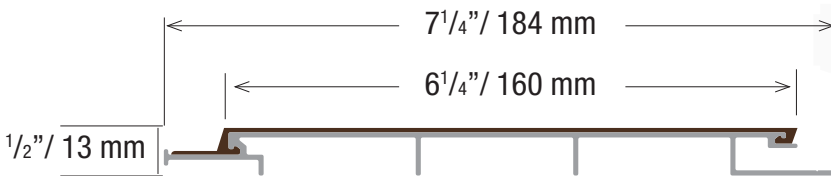
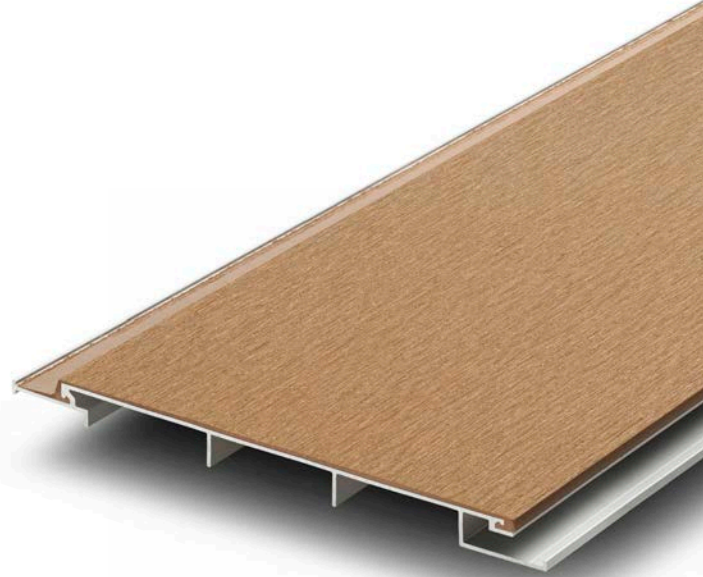
info@geolaminc.com
usa.geolam.com

Vertigo 5010

Geolam[®]
Architectural Eco-Technology

Hybrid Aluminum/WPC Cladding/Soffit

Datasheet



*Technical information may change without warning.
Please ensure you that you reference our latest as shown on our website at www.usa.geolam.com*

Thickness: 1/2 in | 13 mm
Total width: 7 1/4 in | 184 mm
Usable width: 6 1/4 in | 160 mm
Section tolerances in mm: + 0.5 / - 2.0

Fire rating:
Non-combustible as per ASTM E-136 (appendix)

Surfaces finish: Sanded

Profiles fastening and installation:
Check our website www.usa.geolam.com

Standard length: 12 ft | 3.66 m

Or order custom lengths from:
7 ft to 19 ft 8 in | 2.15 m to 6 m

Weight: 0.80 lb/ft | 1.19 kg/m

Secondary moment Ix (cm⁴): 0.56

Secondary moment Iy (cm⁴): 122.03

Section modulus Z+x (cm³): 0.68

Section modulus Z-x (cm³): 0.68

Section modulus Z+y (cm³): 13.47

Section modulus Z-y (cm³): 13.47

Core in anodized aluminum alloy:
A6063S-T5 Serie 6000

Coefficient of Thermal Expansion (20-100°C):
23.4 μm/m/°C

Modulus of Elasticity: 68.9 GPa

Max Tensile Strength: 186 Mpa

Carbon Footprint:
WPC : 1.54 kg CO₂ /Kg
Profile : 9.005 kg CO₂ /Kg

Sanding finish and/or shading may vary between runs

Standard Colors -  All standard colors stocked in the US, no minimum.



Teak



Moleskin



Rosewood

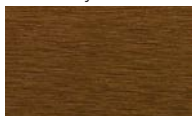


Ebony

Non-Standard Colors - 90 day lead time - Minimum order 5,000 lineal ft.



Carbon



Bilinga

Custom Colors Available - Minimum order 6,000 lineal ft.

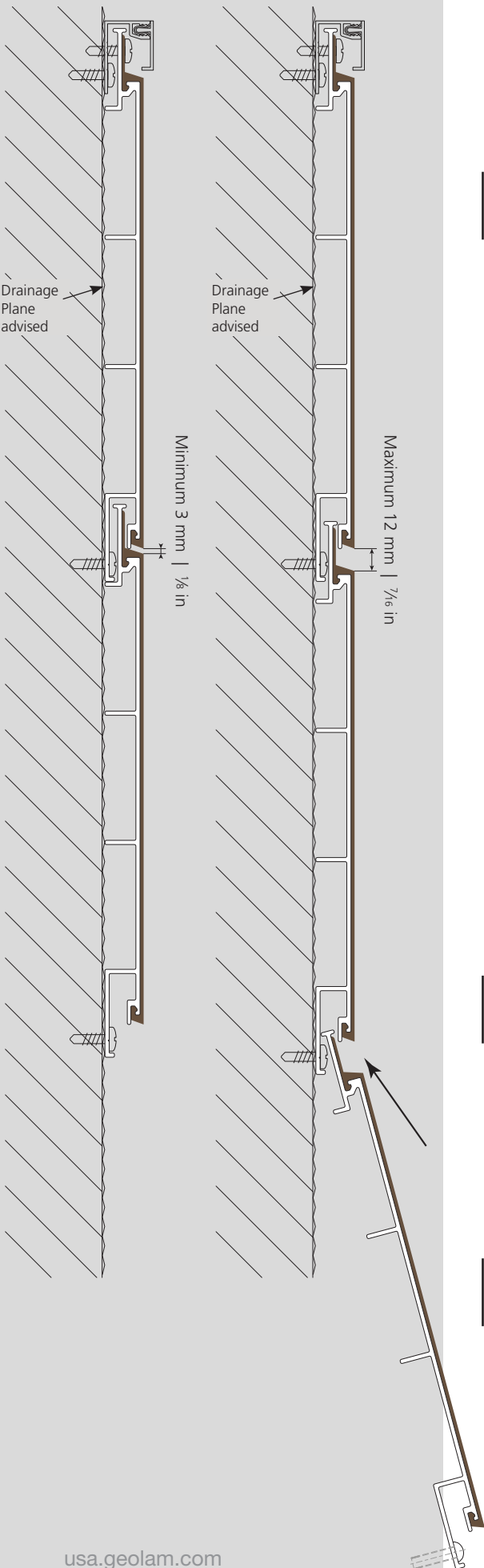
usa.geolam.com
Toll free: 1-877-627-3530
info@geolaminc.com



Vertigo 5010

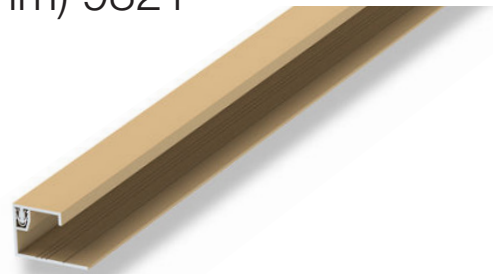
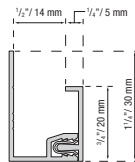
WHS: Wood hybrid system

Datasheet

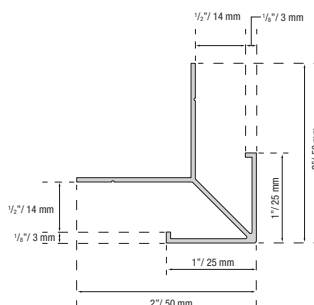


1. Weeping of condensation and air circulation are essential to the health of building products. Although the boards can be mounted directly onto the wall or substrate, it is good building practice to install a drainage plane and mount onto that. Do not seal the top nor bottom of the wall to allow for drainage and air circulation.
2. Geolam boards can be mounted horizontally, vertically, or diagonally directly onto the wall. Over code compliant AVB.
3. Boards may be ripped (cut along their length) as needed.
4. Recommended screws are stainless steel, with an austenitic structure and non-magnetic. Recommended screw diameter is 4 mm, pan head with a diameter of 8.2 mm and length of 19 mm. Maximum 24" o.c.
5. We recommend leaving a 3 mm (1/8") gap between butt ends to allow for expansion/contraction in response to changes in temperature. However, if your design calls for zero-spaced butt joints, please refer to Page 9.
6. The boards may be miter-cut for outside corners or Geolam O/S corners may be used.
6. Exposed screws on the final board may be covered with caulking if desired or our color-matched 2-piece starter/'J' trim as shown below.

2-Piece Starter (J-trim) 9321



Outside Corner 9322

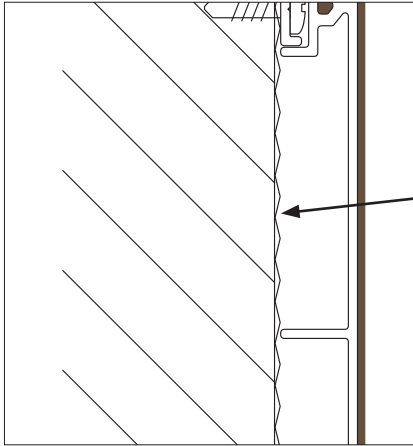




Vertigo 5010

Drainage planes

Drainage planes are water repellent materials that are located behind the cladding and are designed and constructed to allow airflow and water drainage.



Kingspan GreenGuard MAX Building Wrap

Some drainage plane manufacturers:

- Tyvek Stucco wrap
- TYPAR® Drainable Wrap
- HydroGap® Drainable Housewrap
- Kingspan GreenGuard MAX Building Wrap

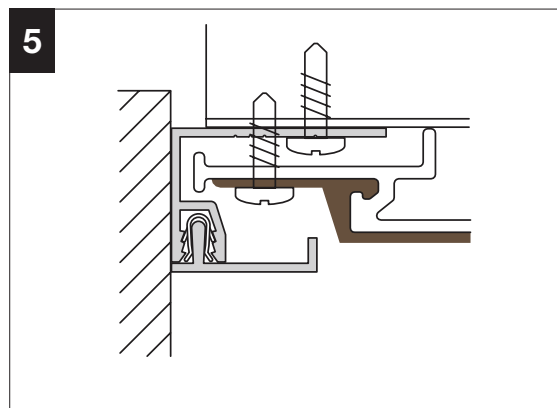
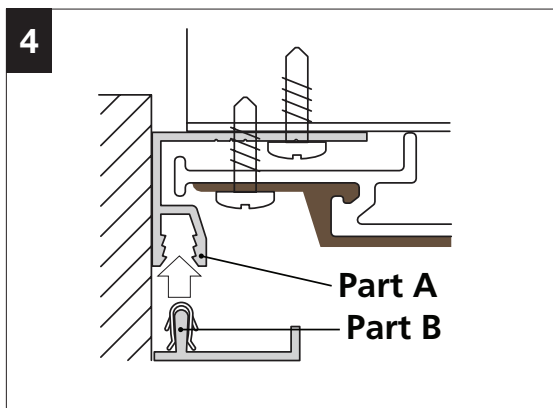
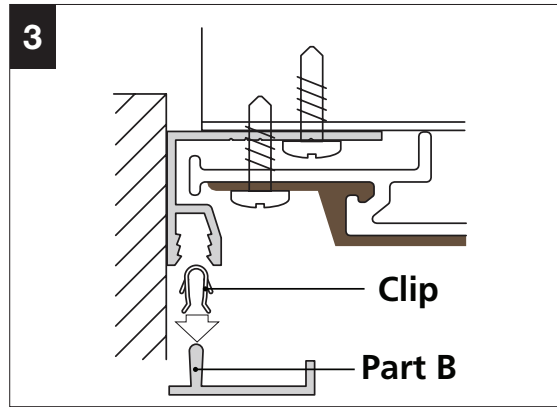
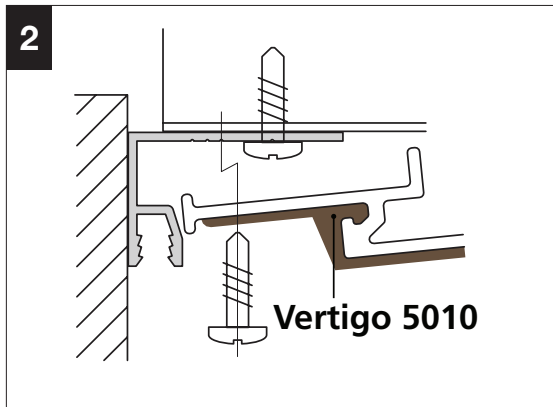
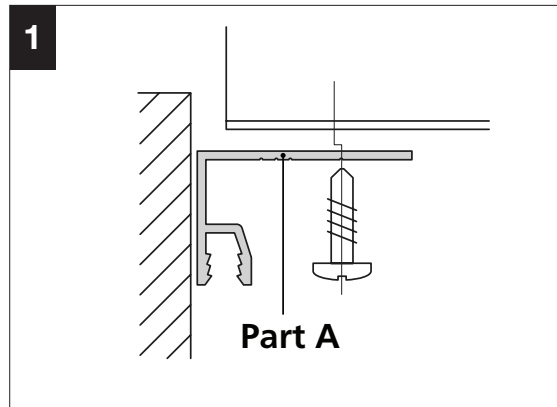
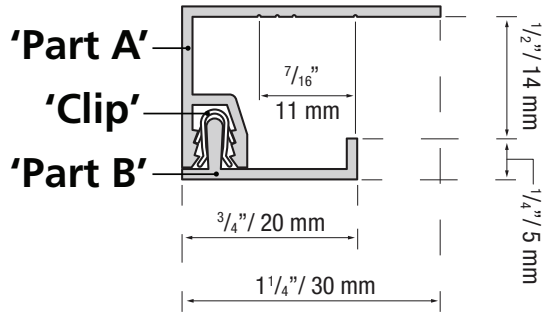
Installation videos

[Click here to watch videos on how to install Vertigo 5010 with a drainage plane or furring strips](#)



Vertigo 5010

Installation of J-trim

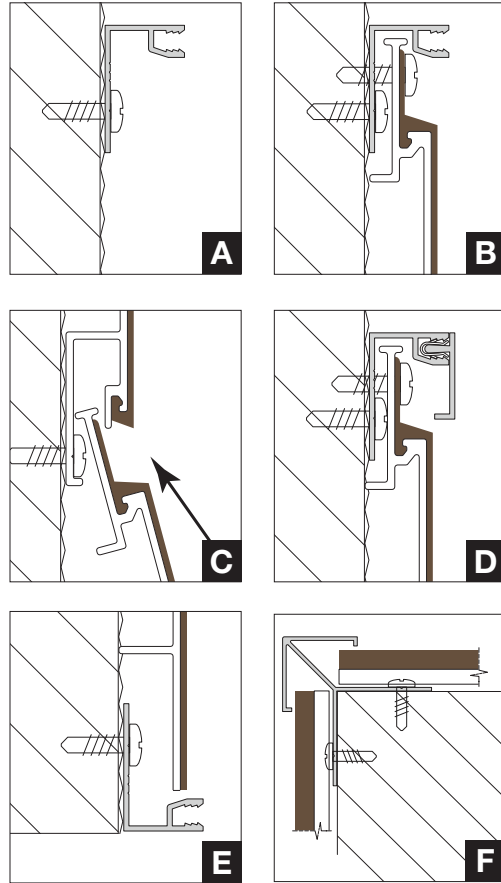




Vertigo 5010

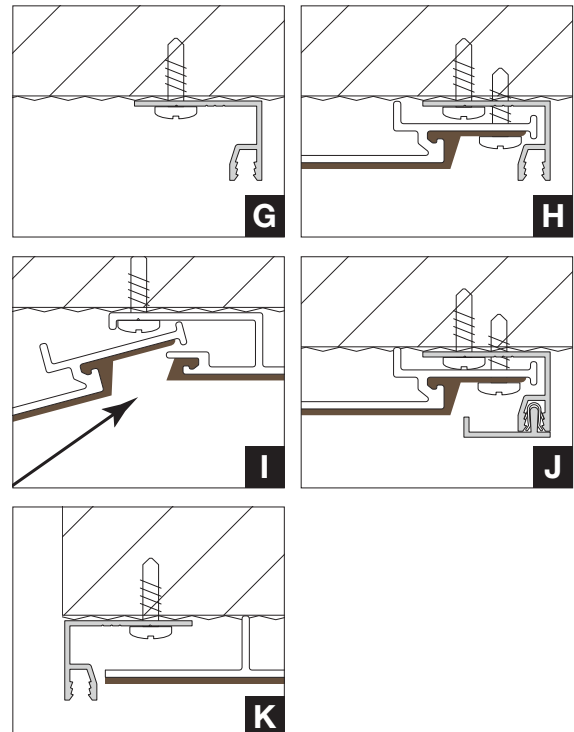
Cladding Installation

1. Install 2-Piece Starter/"J" or other trim component at top and bottom of wall (A)
2. If outside corners are not mitered, install Outside Corners before cladding (F)
3. Install top course first panel and screw at maximum 24" (B)
4. Install next panel with selected joint reveal gap and secure (C)
5. Install adjacent panels leaving 1/8" or 3mm between butt joints
6. Cut last panel as needed to fit into "J"/ Starter Trim and secure (E)



Soffit Installation

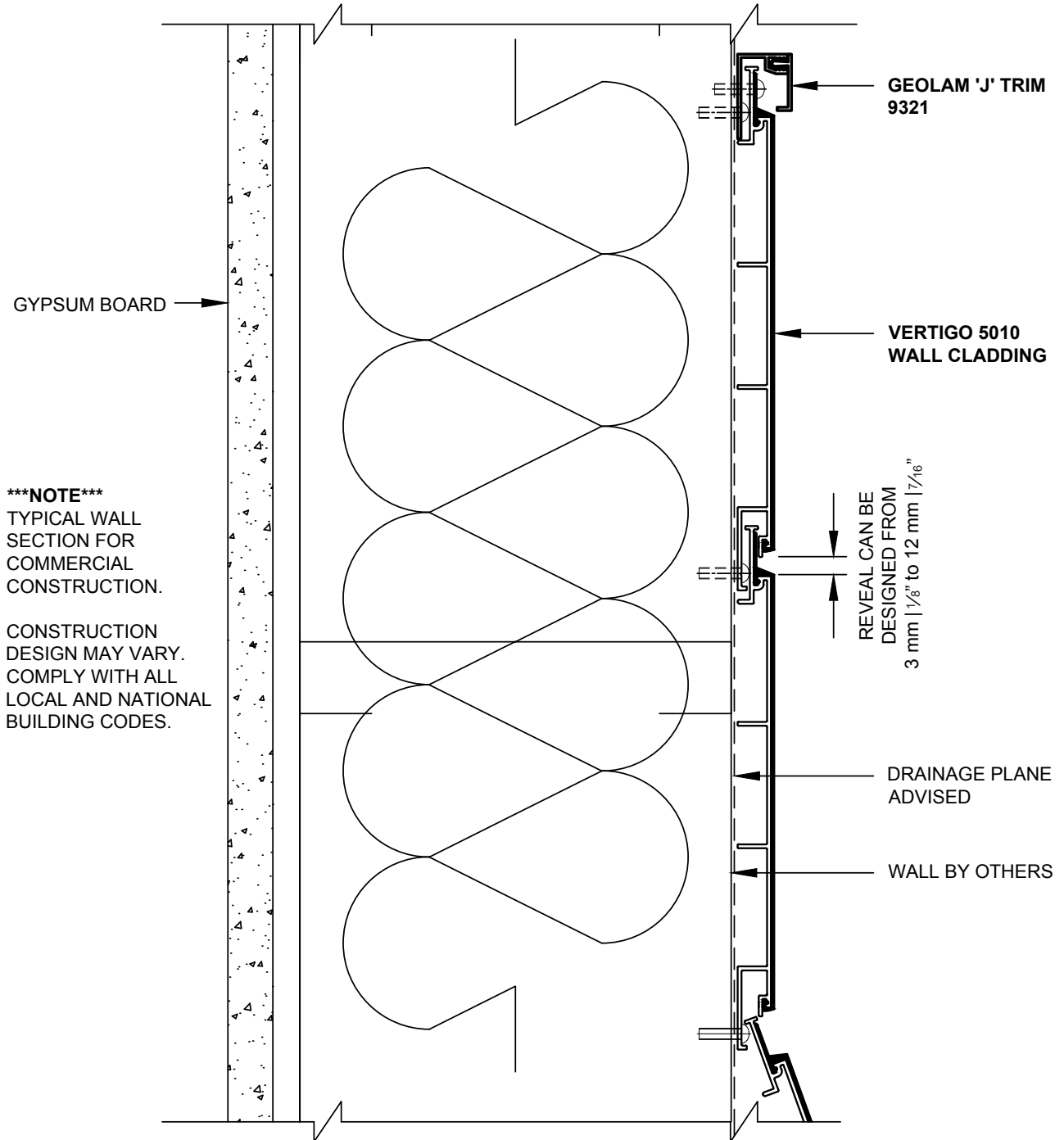
1. Install 2-Piece Starter/"J" at perimeter terminations (G)
2. Install first course into trim component and secure into place (H)
3. Slide adjacent panels with selected joint reveal gap and secure (I)
4. Install adjacent panels leaving 1/8" or 3mm between butt joints
5. Cut last panel as needed to fit into "J"/ Starter Trim and secure (K)





Vertigo 5010

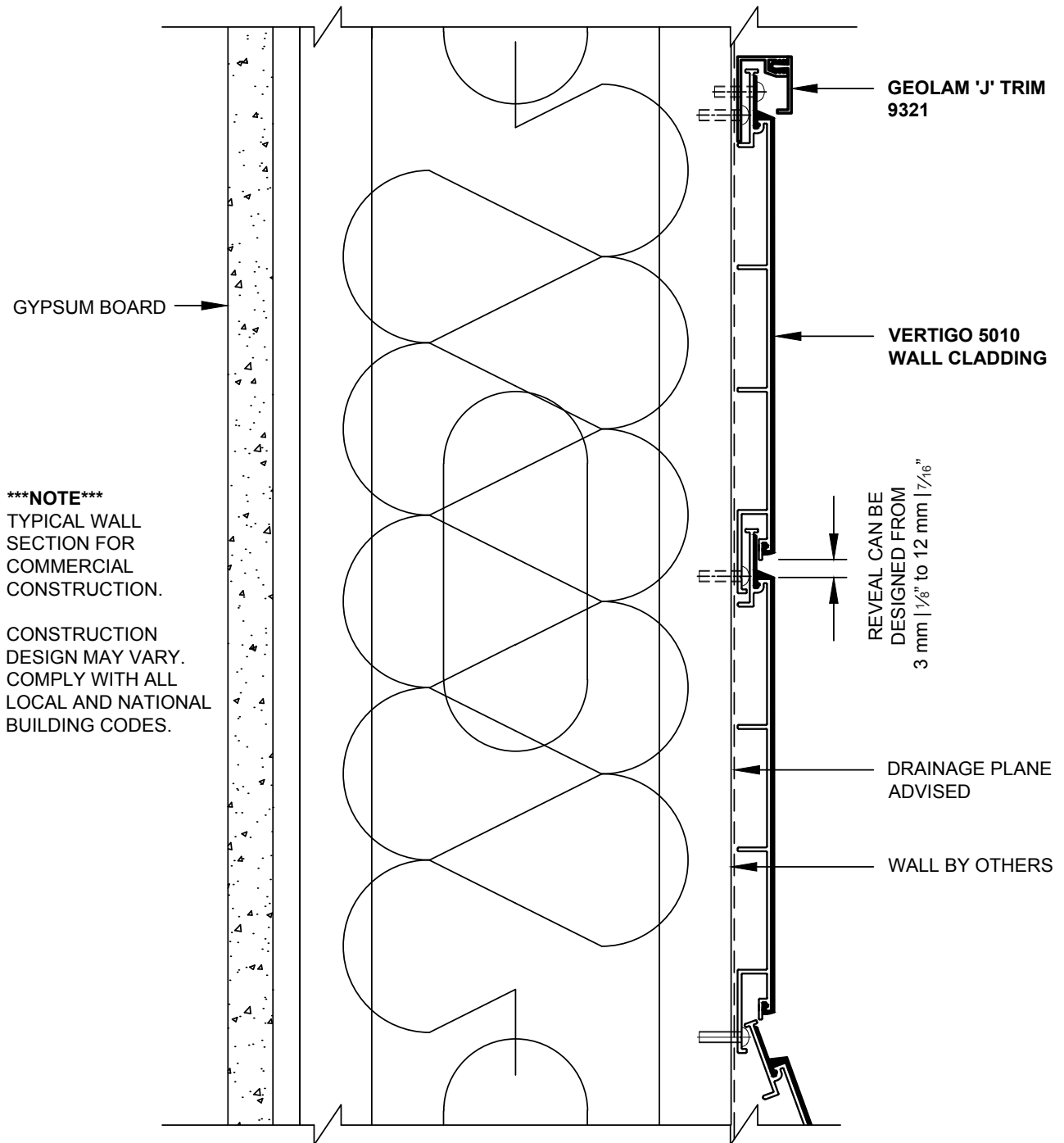
Cladding – Vertical Orientation Wall Detail (Plan View)





Vertigo 5010

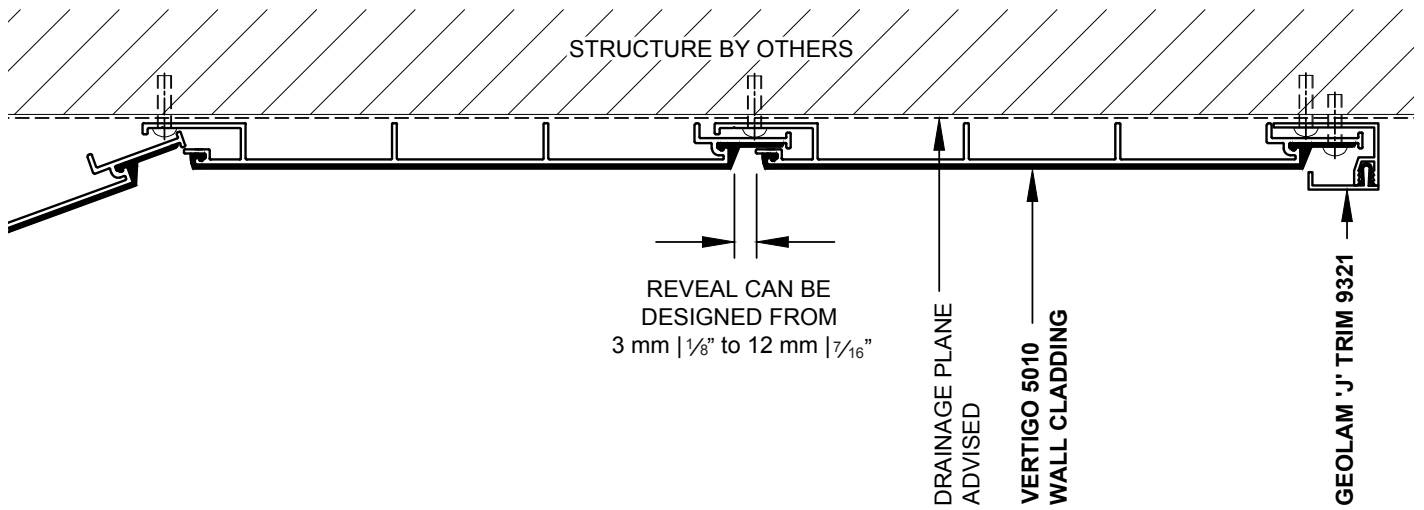
Cladding – Horizontal Orientation Wall Detail (Plan View)





Vertigo 5010

Soffit (Plan View)

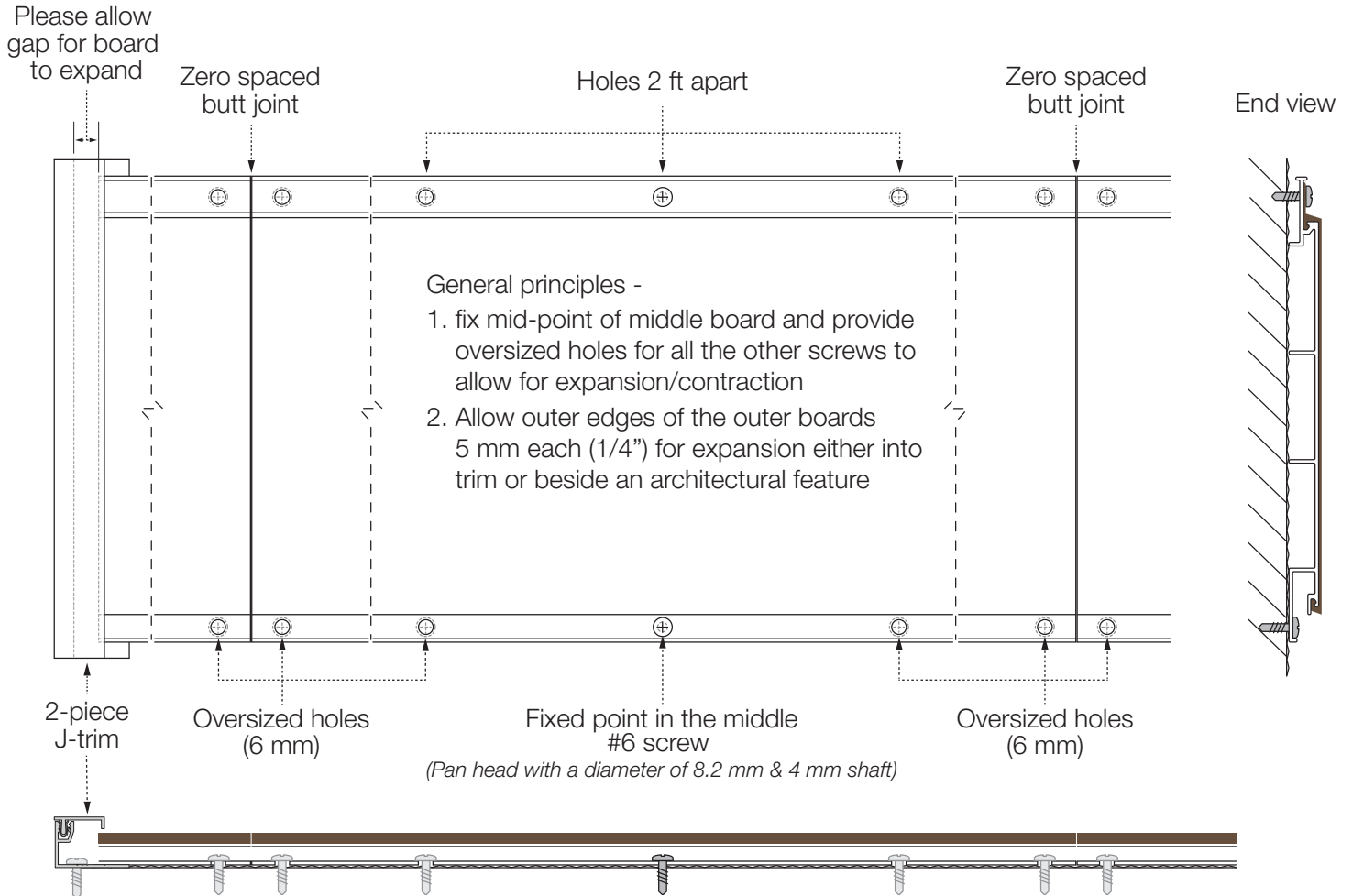




Vertigo 5010

Alternative butt joint - zero spacing

3 boards mounted horizontally



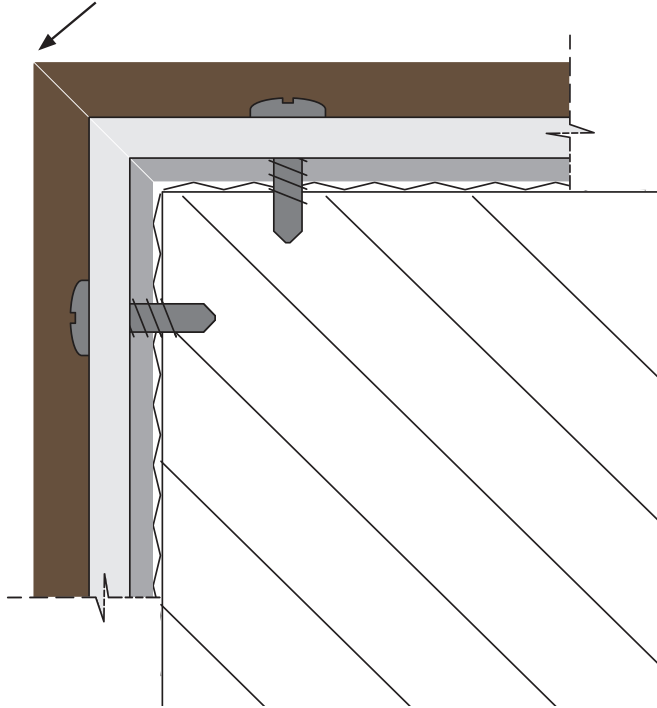
Outside boards expand into trim pieces or beside an architectural feature



Vertigo 5010

Mitered corner

Warning: mitered corners may be sharp!



Solid Substrate

e.g. OSB Plywood

Drainage Plane

e.g. Kingspan GreenGuard® MAX Building Wrap

#4 Stainless Steel Screw

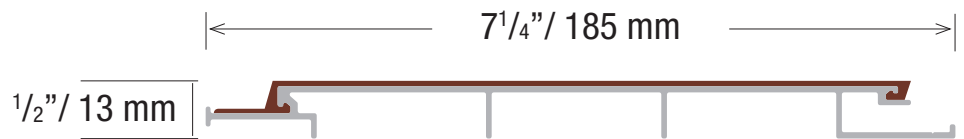
Geolam Vertigo 5010

Vertigo

Cladding/Soffit - Co-extruded for Exterior Rainscreen

Non-combustible according to ASTM E136.

5010



Thickness	1/2" / 13 mm
Width	7 1/4" / 184 mm
Length	12 ft / 3.67 m
Weight	0.80 lb/ft / 1.19 kg/ml
Colors	Teak, Moleskin, Rosewood, Ebony
Maximum distance between supports	24"

10-YEAR LIMITED WARRANTY

Extent of coverage:

This warranty is given to the original Purchaser of GEOLAM[®] wood plastic composite decking and/or cladding boards and/or hybrid aluminum/wpc boards. This warranty does not extend to fasteners that are not supplied by the boards' manufacturer.

Geolam, Inc. guarantees the Purchaser that, for a period of ten (10) years (the term) from the date of the original purchase, under normal use and service conditions, the GEOLAM[®] decking and/or cladding boards and/or hybrid aluminum/wpc boards be free from material defects in workmanship and materials, and will not split, splinter, rot or suffer structural damage from termites or fungal decay.

If such a defect appears during the term, Geolam, Inc. will, at its option, supply replacement product (but not the labour cost, freight, taxes or other expenses associated with de-installation and reinstallation) or refund the purchase in an amount not to exceed Manufacturer's cost of material.

How To File A Warranty Claim:

Purchaser must notify Geolam, Inc. in writing within thirty (30) days after the appearance of the defect, but no later than the end of the Term.

Purchaser shall send a brief written explanation of the defect, along with dated proof of purchase to Geolam, Inc., 9 Shorncliffe Avenue, Toronto, ON, M4V 1S9. Manufacturer reserves the right to request additional information, including, but not limited to, photos, and to conduct a field inspection.

Exclusion of limited warranty:

This limited Warranty does not cover product failure, product malfunction or any damages resulting from:

- (a) improper installation of GEOLAM[®] products and/or failure to comply with Geolam, Inc.'s installation instructions
- (b) beyond normal use, or in an application not recommended by Geolam, Inc.'s installation instructions and local building codes;
- (c) movement, distortion, collapse or settling of the ground or the supporting structure on which GEOLAM[®] products are installed;
- (d) any act of God (such as flooding, hurricane, earthquake, lightning, etc.), environmental condition (such as air pollution), or staining from foreign substances (such as dirt, grease, oil, etc.);
- (e) variations or changes in color of GEOLAM[®] products;
- (f) normal weathering due to exposure to sunlight, moisture, and atmosphere, and accumulation of dirt or stains;
- (g) damages of any kind caused by animals, domestic or otherwise;
- (h) improper handling, storage, abuse or neglect of GEOLAM[®] products by Purchaser, or third parties;
- (i) any fasteners not supplied by Geolam, Inc.; and

Failure to strictly adhere to Manufacturer's written instruction manual for the installation, use or maintenance of GEOLAM[®] will render this Limited Warranty null and void.

Limitations of remedies and exclusion of consequential and incidental damages

To the extent permitted by law, Geolam, Inc.'s liabilities are limited solely and exclusively to the obligations specifically specified herein and under no circumstances will Geolam, Inc. be liable or obligated for any incidental, consequential, indirect, special, punitive or any other damages of any kind whatsoever.

This writing is understood and intended to be the final expression of the parties' agreement and is **a complete and exclusive statement** of the terms and conditions with respect thereto, superseding all prior agreements or representations, oral or written, and all other communication between the parties relating to the subject matter of this agreement. No agent, employee or any other party is authorized to make any warranty on behalf of Geolam, Inc. in addition to that made in this agreement.

This warranty is effective for purchases made on or after May 1, 2011.