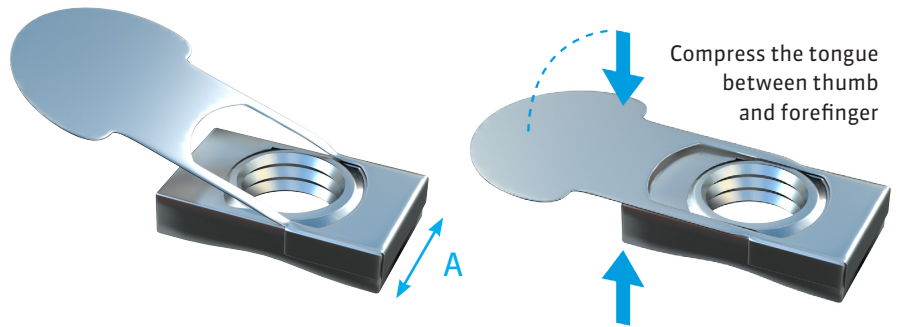
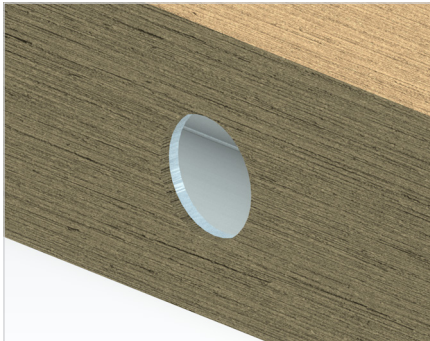


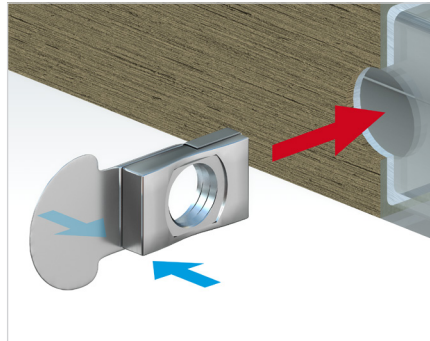
Fixing profiles using InPull nut



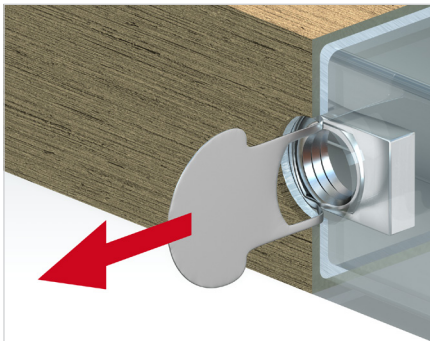
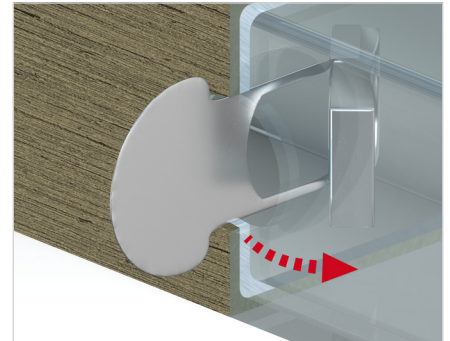
Bolt Size	Prehole Diameter (mm)	Nut Width A (mm)	Max Torque (Nm)	Max Tension Load (kN)
M6	10.2	9.5	10.0	7.8
M8	12.7	12.0	24.5	14.7
M10	15.7	14.3	39.2	19.6
M12	18.0	16.9	58.8	29.4



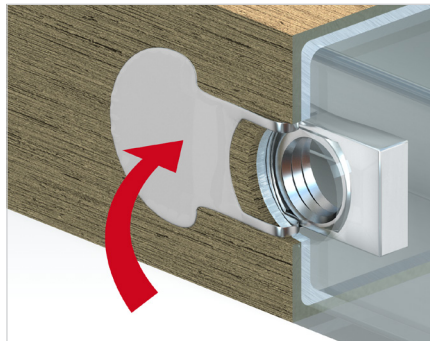
Pre-drill as shown (see above table for diameter). Select the correct InPull nut (M6 to M12) according to your fastening requirements.



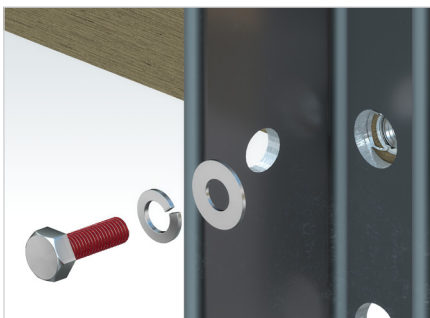
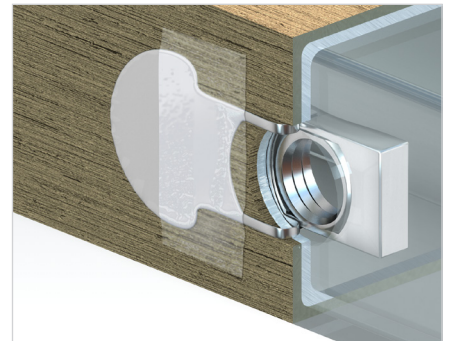
Insert the InPull nut as shown. Squeeze the tongue as you insert the nut and release once the nut is in place. Once released the nut will rest at an angle to the inside of the board.



Pull out the tongue so as to secure the nut along the inside of the board.



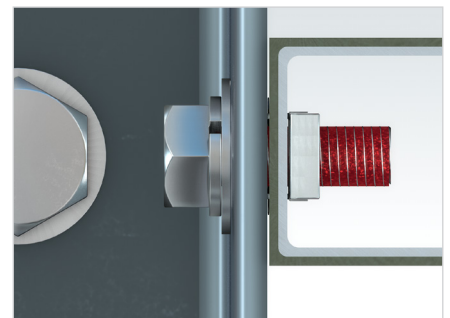
Lay the tongue along the exterior of the board, if necessary fasten with tape to hold it.



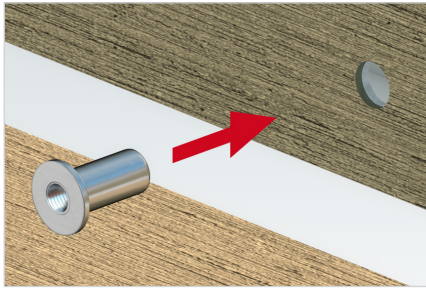
Installation of the supporting structure



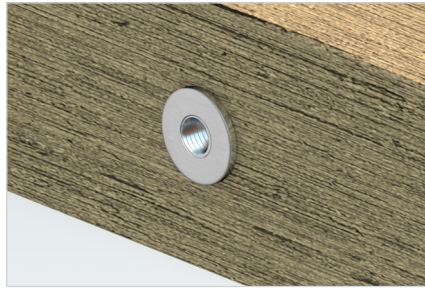
Example of assembly brackets attached with bolts and anaerobic glue e.g. "thread locker". The pre-drilled holes are wider than the bolt shaft (2 to 4 mm) to allow for expansion of the board. Washers are required as shown.



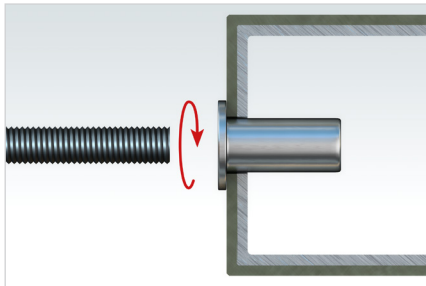
Fastening profiles using blind nut



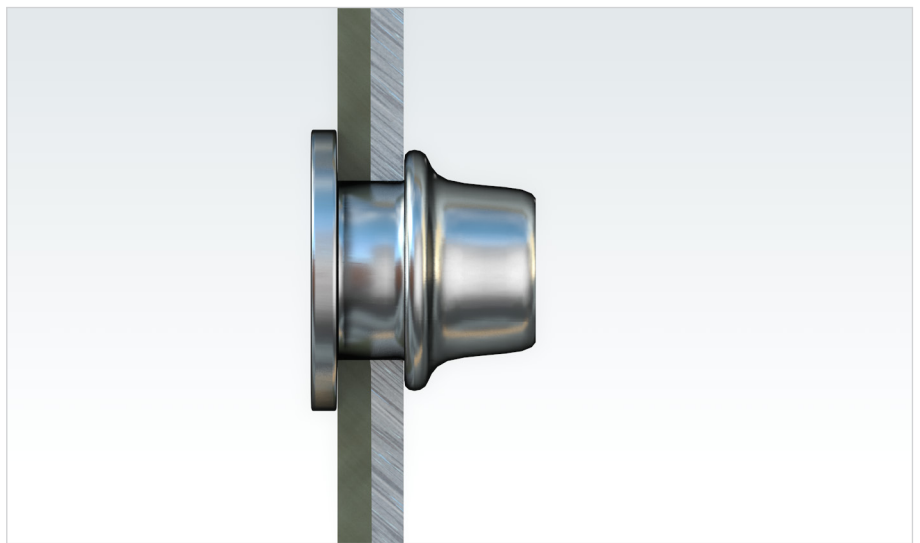
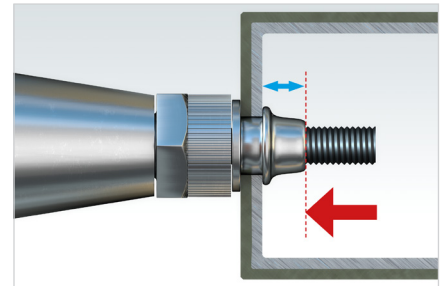
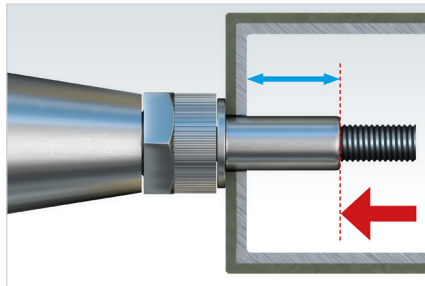
Pre-drill as shown.



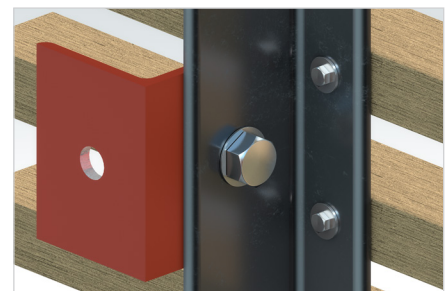
Select the correct blind nut according to your fastening requirements.



Setting the blind nuts (manual or pneumatic tool).



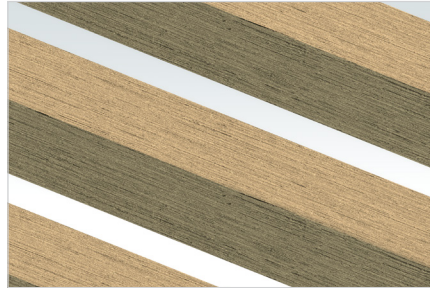
Installation of the supporting structure. The pre-drilled holes are wider (2 to 4 mm) than the bolt shaft to allow for expansion of the board. Washers are required as shown.



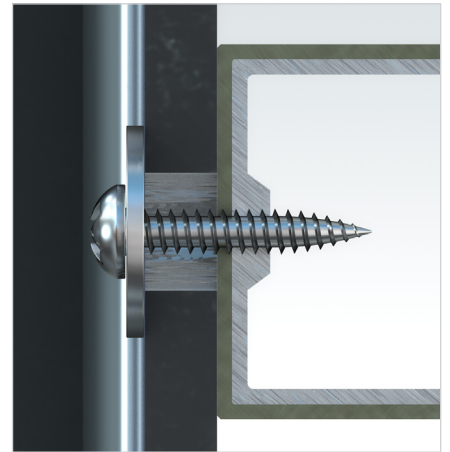
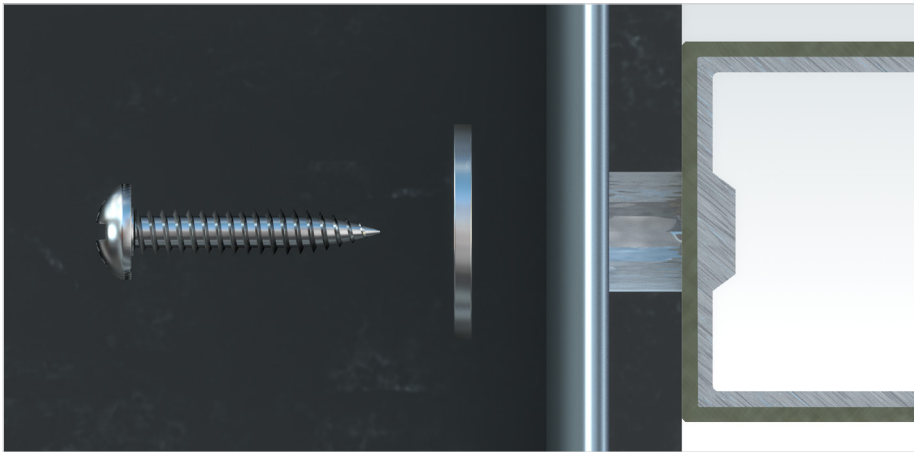
Fastening profiles using self-tapping screw



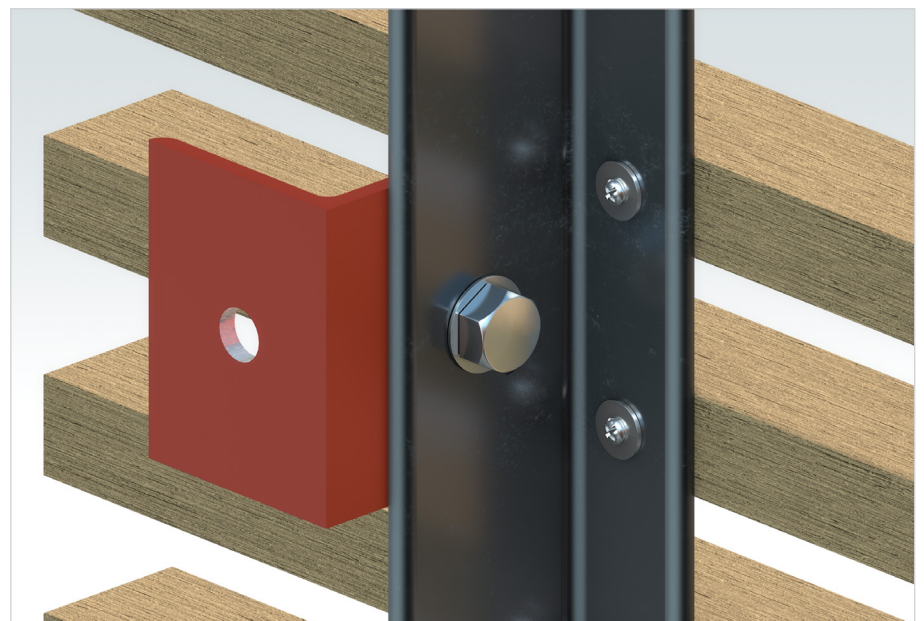
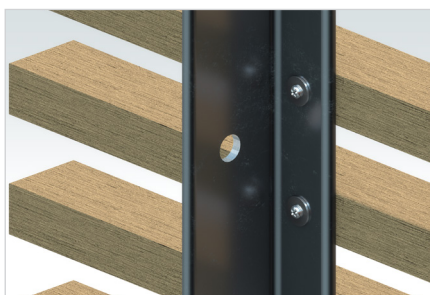
For profiles with oversized aluminum wall, a direct fastening of the profile is possible (example : Soleo 6008 installed sideways).



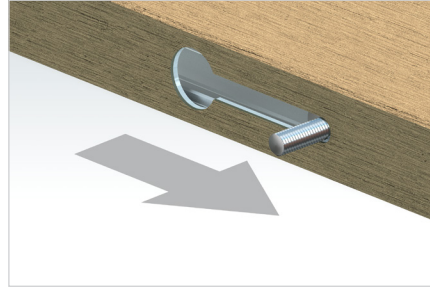
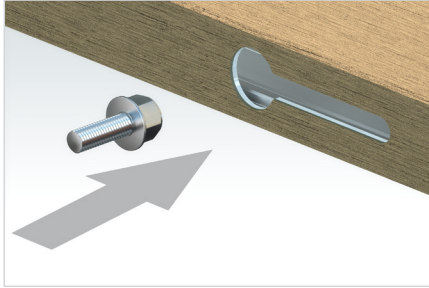
Installation of the supporting structure. The pre-drilled holes are wider (2 to 4 mm) than the bolt shaft to allow for expansion of the board. Washers are required as shown.



Example of assembled brackets.



Fastening profiles using flange bolt



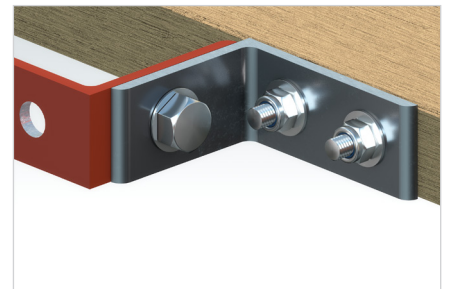
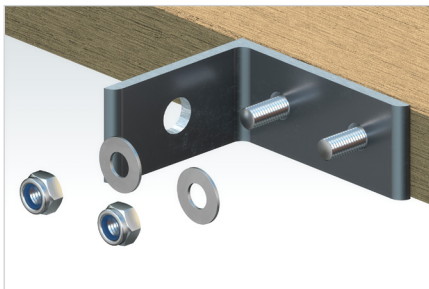
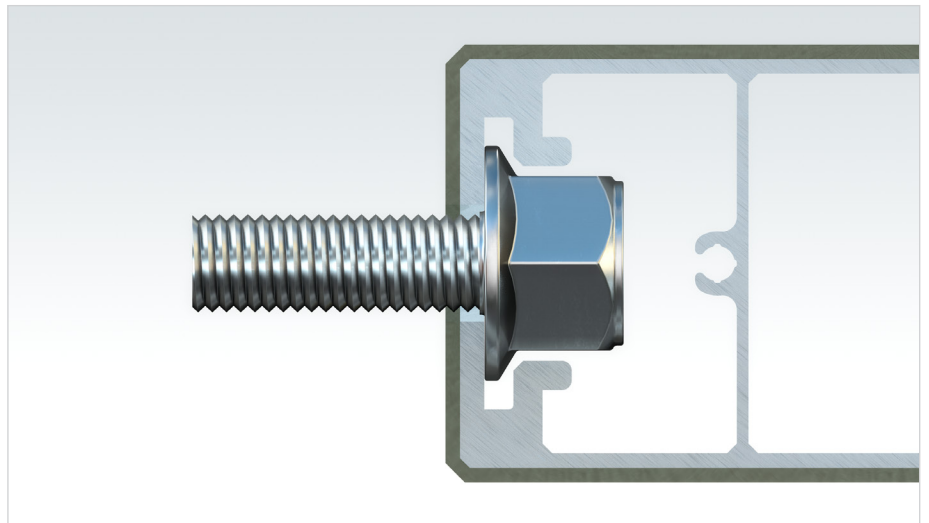
Setting up the first flange bolt.



Setting up the second flange bolt.

For specific profile only, use flange bolts allows a strong fixation (example: Soleo 6032 installed sideways).

According to the picture, drill a specific oblong hole using a numerically controlled milling machine.



Example of fixation on assembly brackets using braked nuts.